



**BEIJING REAGENT LATEX PRODUCTS CO., LTD.**



**MEDICAL GLOVES**



**HOUSEHOLD GLOVES**



**INDUSTRIAL GLOVES**

**FAITHFULNESS    DEVOTION**

**SOLIDARITY    INNOVATION**



# CONTENTS

CONTENTS	01
----------	----

COMPANY PROFILE	02
-----------------	----

QUALIFICATION CERTIFICATE	03
---------------------------	----

PRODUCTION AND TEST FACILITIES	04
--------------------------------	----

ORGANIZATION CHART	06
--------------------	----

MEDICAL GLOVES	07
----------------	----

HOUSEHOLD GLOVES	12
------------------	----

INDUSTRIAL GLOVES	15
-------------------	----

## 07 MEDICAL GLOVES

DISPOSABLE LATEX EXAMINATION GLOVES	08
DISPOSABLE NITRILE EXAMINATION GLOVES	08
DISPOSABLE NEOPRENE EXAMINATION GLOVES	09
STERILE LATEX EXAMINATION GLOVE	09
STERILE LATEX SURGICAL GLOVE, LIGHTLY POWDERED	10
STERILE LATEX SURGICAL GLOVE, POWDER FREE	10
STERILE NITRILE SURGICAL GLOVES, POWDER FREE	11
STERILE NEOPRENE SURGICAL GLOVES(CHEMOTHERAPY)	11

## 12 HOUSEHOLD GLOVES

EASY-USE MULTIFUNCTIONAL RUBBER GLOVE	13
UNLINED LATEX HOUSEHOLD GLOVE (15MIL)	13
UNLINED NITRILE HOUSEHOLD GLOVE(11MIL)	14

## 15 INDUSTRIAL GLOVES

NITRILE FOOD GRADE GLOVE	16
NITRILE ACID&ALKALI RESISTANT GLOVE	17





## COMPANY PROFILE

BEIJING REAGENT LATEX PRODUCTS CO., LTD. was founded in 1993. Here more than 400 employees dedicate to offer the excellent hand protection gloves for worldwide users. As one of the biggest export commodities bases of Chinese latex products, its annual latex consumption is 3000 tons. The annual turnover of exam gloves reaches 100 million pieces and surgical gloves reaches 90 million pairs.

Our products range contains Latex Exam and Surgical gloves, Nitrile Exam and Surgical Gloves, Neoprene Exam and Surgical Gloves, and Latex/ Nitrile Household Gloves and Industrial Gloves with function of acid&alkali resistance and Food Contact.

There are 6 automatic manufacture lines advanced in the world and chlorinator introduced from America for powder free process. One Clean Room with an area of nearly 600m<sup>2</sup> functions to make clearer surgical gloves. The Lab and Inspection Department has been furnished with advanced apparatus to make sure the quality control of each product.

The registered brand of our product is SNOW LOTUS with the most popular latex glove for medical use. Its production, technology, inspection level and management are in the advanced level in the world. The manufacturing of all products strictly comply with national and international standards. Our products are complying with EN455, ASTM, and ISO.

In order to enhance the quality control of our products, we have established a complete and perfect quality management system for our products. In 2004, the TUV Quality Service Center of Germany had made an evaluation of this system of our company and authorized us ISO9001: 2003 and ISO13485:2003 Quality System Certificates. Our Exam Gloves and Medical Gloves have acquired CE Product Certificate and FDA 510(K) numbers.

“Satisfying customers is the starting and landing point of quality control.” is our forever belief.



www.rilatex.com - 3 -





① ② ③ ④ PRODUCTION LINE

⑤ CLEANROOM OF PACKING&INSPECTION

⑥ EACH PIECE INSPECTION IN CLEANROOM

⑦ CLEANROOM OF UNFINISHED GOODS

⑧ AUTO-PACKING MACHINE IN CLEANROOM

⑨ LABORATORY OF CHEMICAL TEST

⑩ LABORATORY OF PHYSICAL TEST

⑪ WATERTIGHT TEST UNIT

⑫ CLEANROOM TEST AREA

⑬ PRODUCTION MACHINES-BOILER ROOM

⑭ PRODUCTION MACHINE-CHLORINATION PROCESS

⑮ PRODUCTION MACHINE-ROTARY DRUM

⑯ PRODUCTION MACHINES-POWER DISTRIBUTION ROOM

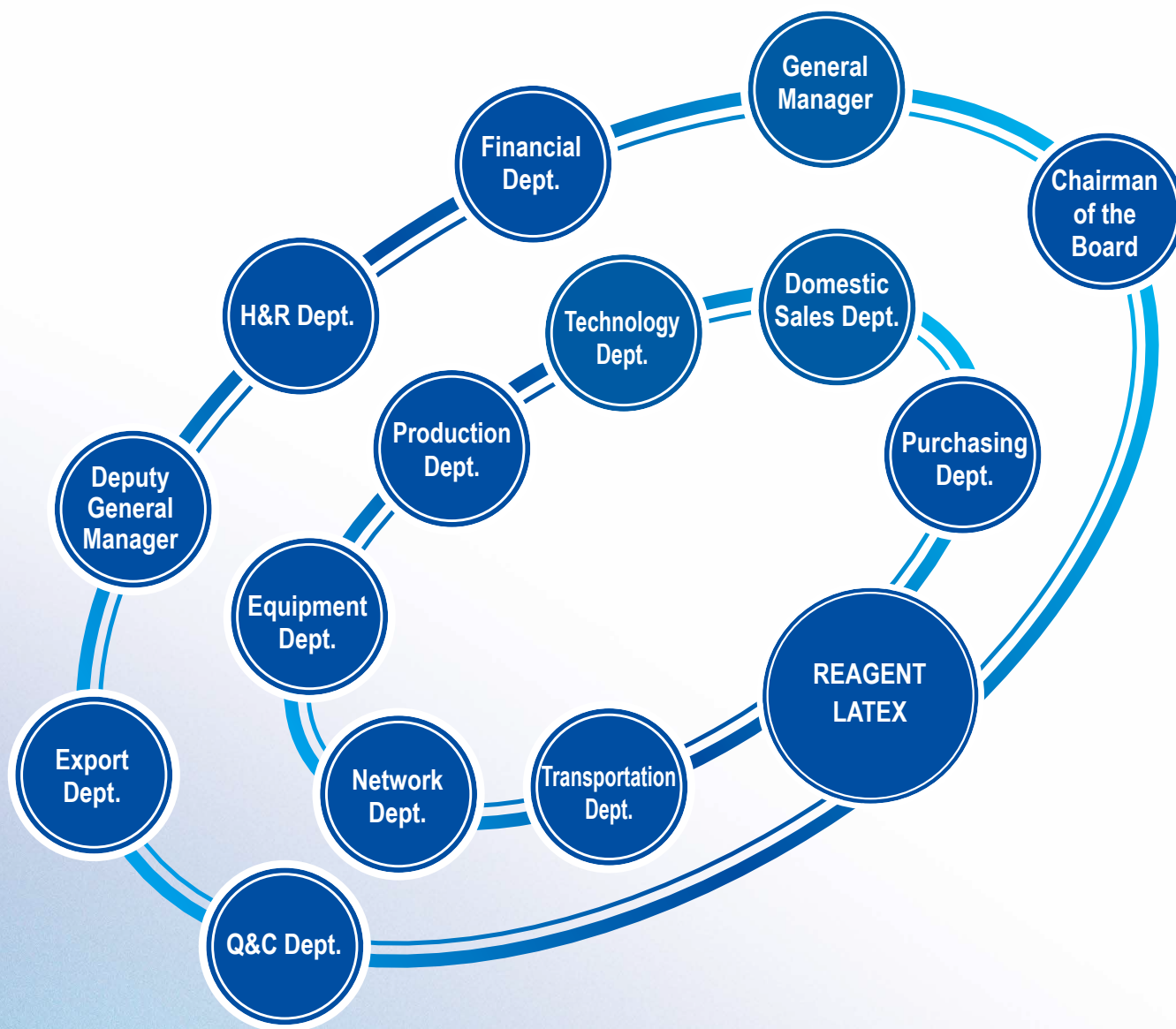




# PRODUCTION AND TEST FACILITIES



# ORGANIZATION CHART

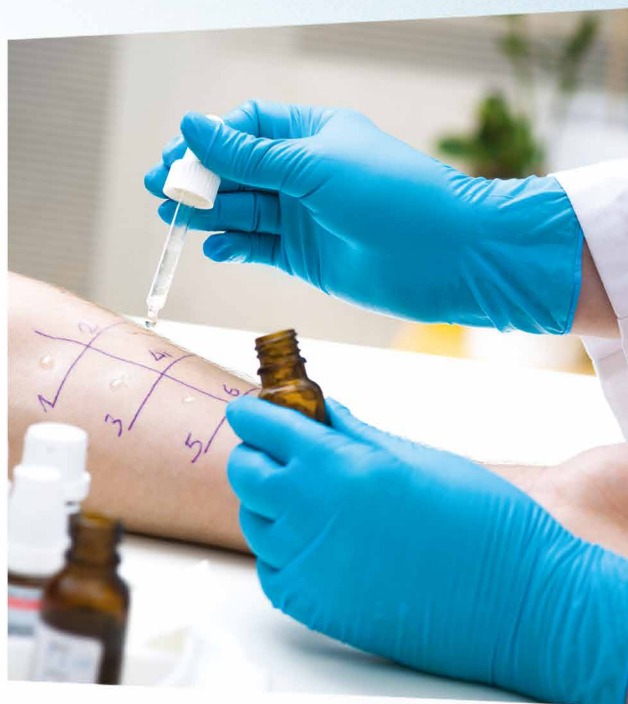






BEIJING REAGENT LATEX PRODUCTS CO., LTD.

## » MEDICAL GLOVES



- CUSTOMER SATISFACTION 100%;
- EMPLOYEE SATISFACTION 100%;
- PERCENT OF PASS IN RANDOM INSPECTION 100%.



ISO  
9001:2008

ISO  
13485:2003

ISO  
14001:2004



## » DISPOSABLE LATEX EXAMINATION GLOVES

### ADVANTAGES & FEATURES:

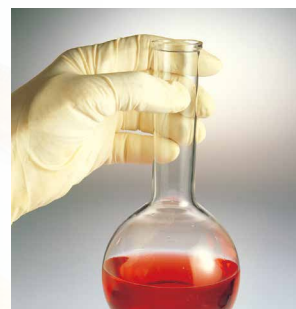
- Non-Sterile, Ambidextrous, Disposable;
- Ambidextrous, sizes: S, M, L, XL, 240mm long;
- Beaded Cuff Design To Prevent Rolling Down;
- Textured & Smooth Outer Finish and Smooth Inner Finish;
- Meets EN455, ISO, ASTM Standards, FDA 510(K);
- Offers Excellent Barrier Protection, Flexibility;
- 100% Imported Natural Rubber Latex, Low Protein Content.

### PACKING METHOD:

- 100Pcs Per Dispenser Box, 25.4×12.4×6.4cm;
- 1000Pcs Per Master Carton, 25.5×25.5×37.5cm;
- 1,200,000pieces per 20FCL and 2,400,000pieces per 40FCL;
- Other Packagings are Available Upon Request.

### APPLICATIONS:

To protect your hands from contamination and offer necessary protection for your products. Applied in the following fields, hospital service, drug industry, beauty shops and food industry.



## » DISPOSABLE NITRILE EXAMINATION GLOVES



### ADVANTAGES & FEATURES:

- Sizes: S, M, L, XL, 240mm long;
- Ambidextrous, Non-Sterile, Disposable, Bead Rolled;
- Made of 100% High Quality Nitrile Latex;
- Completely No Nature Rubber Latex, Reduce Protein Reaction;
- Oil Resistant, Solution Resistant And Puncture Resistant;
- Textured Surface Offer Excellent Grip in operation.

### PACKING METHOD:

- 100Pcs Per Dispenser Box, 25.4×12.4×6.4cm;
- 1000Pcs Per Master Carton, 25.5×25.5×37.5cm;
- 1,200,00 Pcs Per 20 FCL & 2,400,000 Pcs PER 40 FCL;
- Other Packagings are Available Upon Request.

### APPLICATIONS:

It can offer full-spectrum protection for people, products and process, which can be used in variety application as hospital, medical service, drug industry and food industry, etc.



# » DISPOSABLE NEOPRENE EXAMINATION GLOVES

## ADVANTAGES & FEATURES:

- Available sizes: S, M, L, XL;
- Ambidextrous, Non-Sterile, Disposable, Bead Rolled;
- Excellent fat resistance, ideal using in a long-lasting surgery;
- High resistance to alcohol and a broad range of cytostatic chemicals;
- Made of neoprene rubber compounds, without containing latex protein;
- Better resistance to tearing and puncture than most latex and nitrile gloves;
- Prevent Type I and Type II allergies while keeping the softness and flexibility of latex gloves;
- Quality assured by AQL inspection, water leak test and air inflation test before packing.

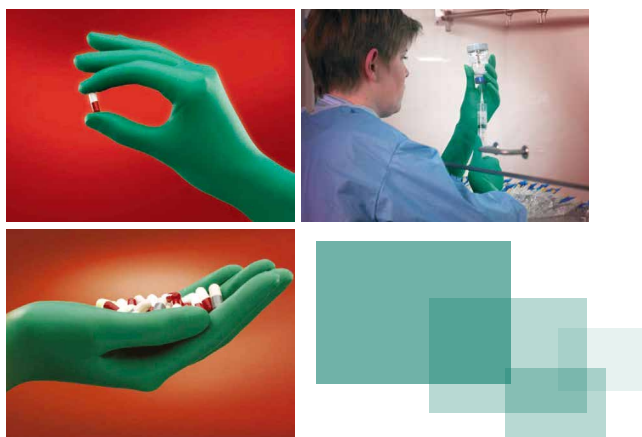


## PACKING METHOD:

- 100 pcs/box, 1000pcs/carton(40×26×27.5cm);
- Other Packagings are Available Upon Request.

## APPLICATIONS:

It is the best choice of all pharmaceutical and laboratory applications, could be applied in chemotherapy operation. The manufacture, technology, inspection and management level of our product leads all peers in this industry and strictly comply with domestic and international standards.



# » STERILE LATEX EXAMINATION GLOVE

## ADVANTAGES & FEATURES:

- Sterilized by Gamma ray, Ambidextrous, Disposable;
- Ambidextrous, sizes: S, M, L, XL, 240mm long;
- Beaded Cuff Design To Prevent Rolling Down;
- Textured & Smooth Outer Finish and Smooth Inner Finish;
- Meets EN455, ISO, ASTM Standards, FDA 510(K);
- Offers Excellent Barrier Protection, Flexibility;
- 100% Imported Natural Rubber Latex, Low Protein Content.

## PACKING METHOD:

- Individual packages, 1 pair/inner wallet/pouch;
- 300 pairs Per Master Carton, 47×27×41cm;
- 165,000 pairs per 20FCL and 330,000 pairs per 40FCL;
- Other Packagings are Available Upon Request.

## APPLICATIONS:

To protect your hands from contamination and offer necessary protection for your products. Applied in the following fields, hospital service, drug industry, beauty shops and food industry.



## » STERILE LATEX SURGICAL GLOVE, LIGHTLY POWDERED

### ADVANTAGES & FEATURES:

- Available Sizes: 6.0# - 9.0#;
- Beaded Cuff, Embossed Sizes On the back of hand;
- Lightly powdered with USP corn starch;
- Anatomic Shape For Left / Right Hands Individually;
- Special Hand Shape To Gain Superior Touch And Comfort;
- Textured Surface To Add Grip Force;
- Gamma Ray Sterile According To EN556&ISO11137;
- High Tensile Strength Minimize the Tearing During Wearing;
- Made of 100% Imported Natural Rubber Latex, Low Protein Content.



### PACKING METHOD:

- Individual packages, 1 pair/inner wallet/pouch;
- 50 pairs/Dispenser Box, 26.2×13.5×18cm;
- 500 pairs/Master Carton, 70×28×38.5cm;
- 198,000 pairs per 20 FCL & 396, 000 pairs per 40FCL;
- Other Packagings are Available Upon Request.

### APPLICATIONS:

Sterile Latex Surgical Gloves (lightly powdered), made of 100% natural latex, are widely used in hospital, medical service, drug industry etc, which can protect the operation from cross contamination.

## » STERILE LATEX SURGICAL GLOVE, POWDER FREE

### ADVANTAGES & FEATURES:

- Available Sizes: 6.0# - 9.0#;
- Beaded Cuff, Embossed Sizes On the back of hand;
- Powder free, Chlorinated Process;
- Anatomic Shape For Left / Right Hands Individually;
- Special Hand Shape To Gain Superior Touch And Comfort;
- Textured Surface To Add Grip Force;
- Gamma Ray Sterile According To EN556&ISO11137;
- High Tensile Strength Minimize the Tearing During Wearing;
- Made of 100% Imported Natural Rubber Latex, Low Protein Content.



### PACKING METHOD:

- Individual packages, 1 pair/inner wallet/pouch;
- 50 pairs/Dispenser Box, 26.2×13.5×18cm;
- 500 pairs/Master Carton, 70×28×38.5cm;
- 198,000 pairs per 20 FCL & 396, 000 pairs per 40FCL;
- Other Packagings are Available Upon Request.

### APPLICATIONS:

Sterile Latex Surgical Gloves (powder free), made of 100% natural latex, are widely used in hospital, medical service, drug industry etc, which can protect the operation from cross contamination.



## » STERILE NITRILE SURGICAL GLOVES, POWDER FREE

### ADVANTAGES & FEATURES:

- Available sizes: 6.0# - 9.0#;
- Double surfaces chlorination, makes it easy donning and removal;
- Specific hand shape design, makes it soft and comfortable in use;
- Better tearing and puncture resistance than common latex gloves;
- Synthetic nitrile material, without latex proteins, reduce the allergy risk to skin;
- Strictly controlled thickness to provide high sensitivity and good feel;
- Quality assured by AQL inspection, water leak and air inflation test before packing.



### PACKING METHOD:

- Individual packages, 1 pair/inner wallet/pouch;
- 50 pairs/Dispenser Box, 26.2×13.5×18cm;
- 500 pairs/Master Carton, 70×28×38.5cm;
- 198,000 pairs per 20 FCL & 396, 000 pairs per 40FCL;
- Other Packagings are Available Upon Request.

### APPLICATIONS:

Sterile Nitrile Surgical Gloves, made of high quality synthetic nitrile rubber, without containing latex protein, solvent and oil resistant, tearing resistant, different from common latex gloves. It can be widely used in hospital, healthcare and pharmaceutical industries.



## » STERILE NEOPRENE SURGICAL GLOVES (CHEMOTHERAPY)

### ADVANTAGES & FEATURES:

- Available sizes: 6.0, 6.5, 7.0, 7.5, 8.0, 8.5, 9.0;
- Excellent fat resistance, ideal using in a long-lasting surgery;
- High resistance to alcohol and a broad range of cytostatic chemicals;
- Made of neoprene rubber compounds, without containing latex protein;
- Better resistance to tearing and puncture than most latex and nitrile gloves;
- Prevent Type I and Type II allergies while keeping the softness and flexibility of latex gloves.
- Quality assured by AQL inspection, water leak test and air inflation test before packing.



### PACKING METHOD:

- Individual packages, 1 pair/inner wallet/pouch;
- 50 pairs/Dispenser Box, 28×15×22cm;
- 300 pairs/Master Carton, 46.5×30.5×42.5cm;
- 150,000 pairs per 20 FCL & 300, 000 pairs per 40FCL;
- Other Packagings are Available Upon Request.

### APPLICATIONS:

Sterile Neoprene Surgical Gloves, made of neoprene rubber compounds, without containing latex protein, is the optimum protection for both users and products. It is the best choice of chemotherapy operation and all pharmaceutical and laboratory applications.



## » HOUSEHOLD GLOVES



*USE TECHNOLOGY OF MEDICAL GLOVES TO CREATE  
HIGH QUALITY OF HOUSEHOLD GLOVES PRODUCTS!*



EN 388  
3001



EN 374-2



EN 374-3  
JKL

ISO9001&CE CERTIFIED MEET EN388,EN420,EN374



## » EASY-USE MULTIFUNCTIONAL RUBBER GLOVE

### SPECIFICATION:

Material: natural rubber latex;  
Length: 280mm, thickness: 0.45-0.46mm;  
Weight: 28-30gram/pair;  
Available sizes: 7/S, 7.5/M, 8/L;  
Color: natural white, green, blue and pink, etc.;  
Shape: anatomic shape for left/right hands individually;  
Outer surface: textured at palm, Inner surface: smooth.



### WHERE TO USE IT?

Easy-use Multifunctional Latex gloves, is made of Thailand imported high quality natural rubber latex. Use unique hand shape design from surgical gloves. It can be used in house cleaning, bathroom, kitchen, hospital, laboratory, haircutting, hotel cleaning, mechanical maintenance, fishery processing, etc.



## » UNLINED LATEX HOUSEHOLD GLOVE (15mil)

### PRODUCTS SPECIFICATION:

Available sizes: S, M, L;  
Length: 310mm Thickness: 0.40mm(15mil);  
Weight: 50-70 gram/pair;  
Material: natural rubber latex;  
Color: pink, green, yellow, red, etc.;  
Surface: diamond grip and chlorinated inside, unlined;  
Shape: anatomic shape for left/right hands individually;  
Packing: 1 pair/bag, 12pairs/middle bag, 144pairs/carton.



### WHERE TO USE IT?

UNLINED LATEX HOUSEHOLD GLOVES (DIAMOND GRIP), is made of Thailand imported high quality natural rubber latex. It can be used in house cleaning, bathroom, kitchen, hospital, laboratory, haircutting, hotel cleaning, mechanical maintenance, fishery processing, etc.

## » UNLINED NITRILE HOUSEHOLD GLOVE (11mil)

### SPECIFICATION:

Available sizes: S, M, L;  
Length: 310mm Thickness: 0.28mm(11mil);  
Weight: 40-50gram/pair;  
Material: natural rubber latex;  
Color: rosy, green, orange, white, blue, etc.;  
Surface: diamond/netlike grip and chlorinated inside, unlined;  
Shape: anatomic shape for left/right hands individually;  
Packing: 1 pair/bag, 12pairs/middle bag, 144pairs/carton.



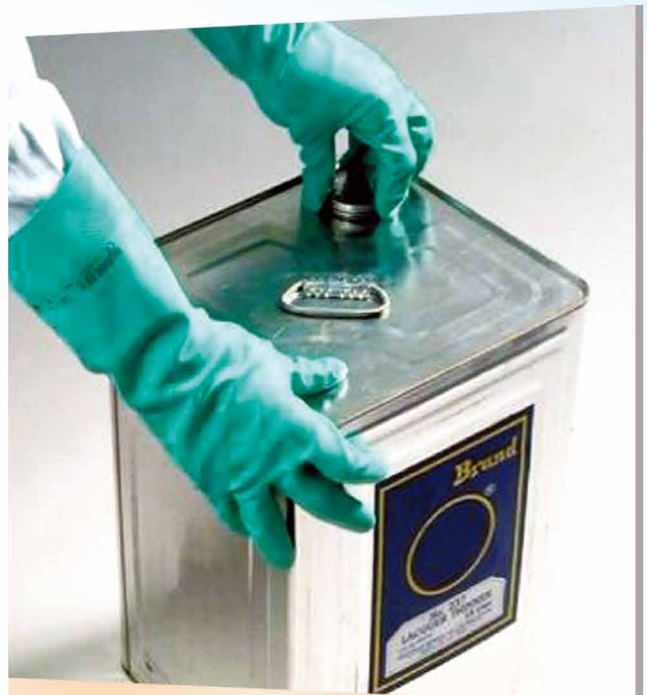
### WHERE TO USE IT?

UNLINED NITRILE HOUSEHOLD GLOVES, is made of imported high quality nitrile material. It can be used in house cleaning, bathroom, kitchen, hospital, laboratory, haircutting, hotel cleaning, mechanical maintenance, fishery processing, chemical handles, painting, etc.





## » INDUSTRIAL GLOVES



WITH OUR WISDOM TO CREATE THE MODEL OF HEALTH CARE  
WITH OUR HEART TO ACHIEVE FULL SATISFACTION OF  
QUALITY&SERVICE



ISO9001&CE CERTIFIED MEET EN388,EN420,EN374



Shellfish Food Contact



Fresh Meat Handling



Fruit and Vegetable Washing



Dairy Food Process

## » NITRILE FOOD GRADE GLOVE (8mil, 11mil, 15mil)

### SPECIFICATION:

Available sizes: 7, 8, 9, 10, 11, 12;

Length: 310-320mm;

Weight: 40-70gram/pair;

Material: natural rubber latex;

Color: blue, green, white, etc.;

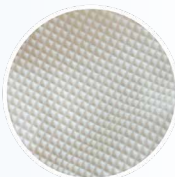
Thickness: 0.20mm(8mil), 0.28mm(11mil), 0.38mm(15mil);

Surface: diamond/netlike grip and chlorinated inside, unlined;

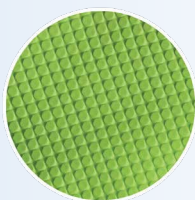
Shape: anatomic shape for left/right hands individually;

Packing: 1 pair/bag, 12pairs/middle bag, 144pairs/carton;

Quality: Meet EN388, EN420 and EN374, comply with food contact requirements of US FDA 21CFR 177.2600.



Diamond Grip



Netlike Grip



### WHERE TO USE IT?

NITRILE FOOD GRADE GLOVES, are made of high quality nitrile material. Its unique characteristic of acid&alkali resistant enables it to be the best choice of protection of hands in chemicals solvent work, painting, kitchen, bathroom, hotel cleaning, hospital and household work, mechanical maintenance, fishery processing, etc.



Fish Scale



## » NITRILE ACID&ALKALI RESISTANT GLOVE (8mil, 11mil, 15mil)

NITRILE ACID&ALKALI RESISTANT PROTECTIVE GLOVES, are made of high quality nitrile material. Its unique characteristic of acid&alkali resistant enables it to be the best choice of protection of hands in chemicals solvent work, painting, hotel cleaning, hospital and household life and the best choice of your high quality life. The manufacture, technology, inspection and management level of our product leads all peers in this industry and strictly comply with domestic and international standards.



### WHERE TO USE IT?

It is used in chemicals solvent handling, painting, house cleaning, bathroom, kitchen, hospital, laboratory, hotel cleaning, mechanical maintenance, fishery processing, etc.

### PRODUCTS SPECIFICATION:

Available sizes: 7, 8, 9, 10, 11, 12;

Length: 310-320mm;

Material: natural rubber latex;

Color: blue, green, white, etc.;

Weight: 40-70gram/pair;

Thickness: 0.20mm(8mil), 0.28mm(11mil), 0.38mm(15mil);

Surface: diamond/netlike grip and chlorinated inside, unlined;

Shape: anatomic shape for left/right hands individually;

Packing: 1 pair/bag, 12pairs/middle bag, 144pairs/carton;

Quality: Meet EN388, EN420 and EN374, comply with food contact requirements of US FDA 21CFR 177.2600.



" SATISFYING CUSTOMERS IS THE STARTING  
AND LANDING POINT OF QUALITY CONTROL."  
IS OUR FOREVER BELIEF.

**Contact Information:**

**BEIJING REAGENT LATEX PRODUCTS CO., LTD.**

**Address:** Ciqu Industrial Zone, Tongzhou District, Beijing 101111, China

**E-mail:** reagent@rubberchina.com or reagent@reagent.china.com

**External Trade Tel.:** 0086-10-81502524    **Fax:** 0086-10-81502522

**Website:** [www.bjreagent.com](http://www.bjreagent.com)    [www.rjlatex.com](http://www.rjlatex.com)